



Britton Street, Gillingham ME7 5ET

£1,100

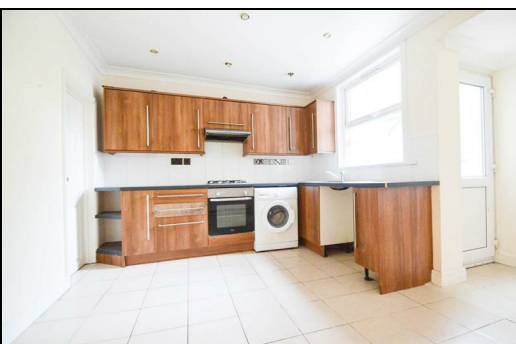
Century Residential are delighted to offer this well presented three bedroom house in Gillingham. This mid terrace house is perfect for a family and is walking distance to the town centre and train station.


Internally the property benefits from a modern fitted kitchen/diner, there is a spacious separate lounge area.

The cellar has also been decorated and would make an ideal office space. There is a garden to the rear.

Upstairs the property offers two good sized bedrooms with an ensuite to the master bedroom!

This property is available end of April! Please call us on 01634 570057 to arrange your viewing!



Energy Efficiency Rating		
	Current	Potential
Very energy efficient - lower running costs		
(92 plus) A		
(81-91) B		
(69-80) C		
(55-68) D		
(39-54) E		
(21-38) F		
(1-20) G		
Not energy efficient - higher running costs		
England & Wales	EU Directive 2002/91/EC 	

Environmental Impact (CO ₂) Rating		
	Current	Potential
Very environmentally friendly - lower CO2 emissions		
(92 plus) A		
(81-91) B		
(69-80) C		
(55-68) D		
(39-54) E		
(21-38) F		
(1-20) G		
Not environmentally friendly - higher CO2 emissions		
England & Wales	EU Directive 2002/91/EC 